

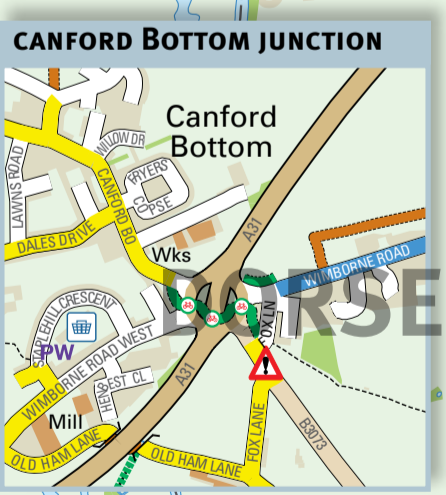
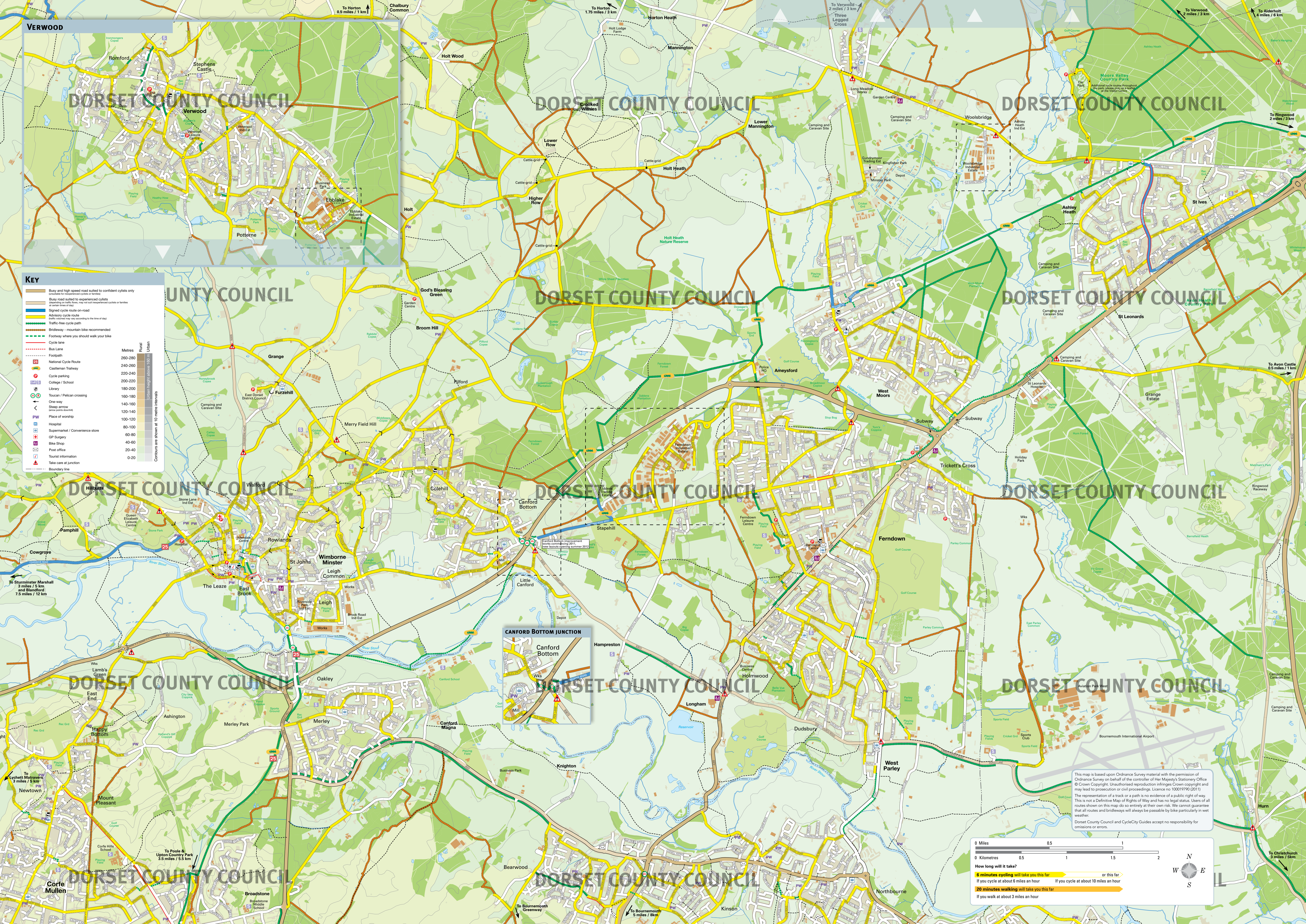


KEY

- Bury and high speed road suited to confident cyclists only
- Bury road suited to experienced cyclists
- Signed cycle route on-road
- Advisory cycle route
- Traffic-free cycle path
- Bridleway - mountain bike recommended
- Footpath where you should walk your bike
- Cycle lane
- Bus Lane
- National Cycle Route
- Castlemans Trailway
- Cycle parking
- College / School
- Library
- Toucan / Pelican crossing
- One-way
- Sleep arrow
- Place of worship
- Hospital
- Supermarket / Convenience store
- GP Surgery
- Bike Shop
- Post office
- Tourist information
- Take care at junction

Metres
 260-280 Rural
 240-260 Urban
 220-240
 200-220
 180-200
 160-180
 140-160
 120-140
 100-120
 80-100
 60-80
 40-60
 20-40
 0-20

Contours are shown at 10 metre intervals



This map is based upon Ordnance Survey material with the permission of Ordnance Survey on behalf of the controller of Her Majesty's Stationery Office © Crown Copyright. Unauthorised reproduction infringes Crown copyright and may lead to prosecution or civil proceedings. Licence no 100019790 (2011)

The representation of a track or a path is no evidence of a public right of way. This is not a Definitive Map of Rights of Way and has no legal status. Users of all routes shown on this map do so entirely at their own risk. We cannot guarantee that all routes and bridleways will always be possible by bike particularly in wet weather.

Dorset County Council and CycleCity Guides accept no responsibility for omissions or errors.

0 Miles 0.5 1 2
 0 Kilometres 0.5 1 1.5 2

How long will it take?

6 minutes cycling will take you this far or this far

If you cycle at about 6 miles an hour If you cycle at about 10 miles an hour

20 minutes walking will take you this far

If you walk at about 3 miles an hour

N
W E
S